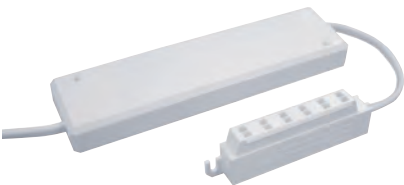



Electronic transformer, 12V/60W



- > For indoor use only
- > For use with halogen lights shown on pages **222-223**
- > Transformer height x width x depth: 16.5 x 168 x 45 mm
- > White plastic transformer with 3.0 m bare ended mains lead and white plastic distributor
- > Order qty: 1 pc



 Mains plug is not included and must be fitted by a qualified electrician


Power	Min. load	Distributor	Cat. No.
12V/60W	10W	6-way	825.56.012

Electronic transformer, 12V/60W or 105W



- > For indoor use only
- > For use with halogen lights shown on pages **222-223**
- > Transformer height x width x depth: 16 x 168 x 45 mm
- > White plastic transformer with 3.0 m bare ended mains lead and white plastic distributor
- > Order qty: 1 pc



 Mains plug is not included and must be fitted by a qualified electrician


Power	Min. load	Distributor	Cat. No.
12V/60W	20W	6 way	825.36.716
12V/105W	35W	5 way	825.36.726

Electronic transformer, 12V/60W



- > For indoor use only, non-dimmable
- > For use with halogen lights shown on pages **222-223**
- > Transformer height x width x depth: 22 x 95 x 32 mm
- > White plastic transformer with 3.0 m bare ended mains lead and white plastic distributor
- > Order qty: 1 pc



 Mains plug is not included and must be fitted by a qualified electrician


Power	Min. load	Distributor	Cat. No.
12V/60W	10W	6-way	825.55.034

Mains plug, 3 pin



- > With 3 Amp fuse
- > White plastic with steel pins
- > Order qty: 1 pc

	Cat. No.
3 Amp	820.43.791

 > It is recommended that the correct number of lights to match the wattage output are used with these transformers to ensure long bulb life  
> Care must be taken not to overload the transformers