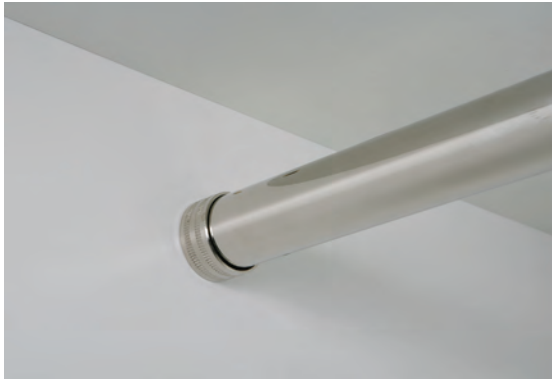
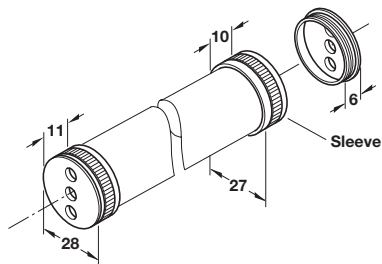


Rail end support

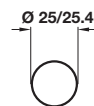
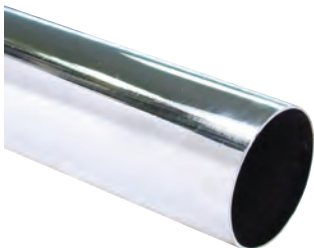


- > Ø 28 mm, for use with Ø 25 mm wardrobe rails
- > Set consists of: 1x one part end support, 1x two part end support
- > The sleeve is pre-installed on the rail, then screwed onto the side panel support
- > Installation method:
Fix rail end supports to side panels, slide sleeve onto wardrobe rail, insert wardrobe rail into non-threaded rail end support, screw sleeve to threaded rail end support
- > Brass
- > Order fixing screws separately
- > Order qty: 1 set



Finish	Cat. No.
Nickel-plated	803.51.757
Dull brass	803.51.855

Wardrobe rail, Ø 25/25.4 mm



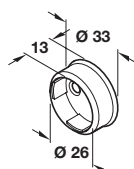
- > 0.6 or 0.7 mm wall thickness
- > 2.5 m length
- > Steel
- > Order qty: 1 pc



*Please note only end support 803.52.204 shown below is compatible with this rail

Finish	Diameter	Wall thickness	Cat. No.
Chrome-plated	Ø 25.4 mm	0.7 mm	801.12.214*
Brass-plated	Ø 25 mm	0.6 mm	801.12.523

Wardrobe rail socket



- > For use with Ø 25 mm wardrobe rails
- > Concealed fixing
- > Steel
- > Order qty: 1 pc



Finish	Cat. No.
Chrome-plated	803.52.204