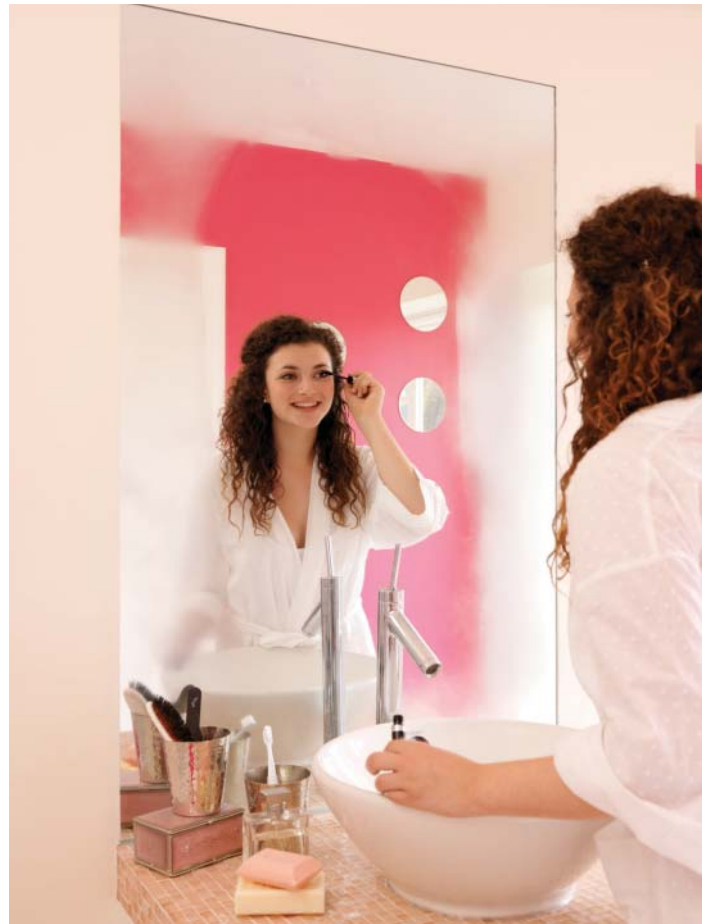
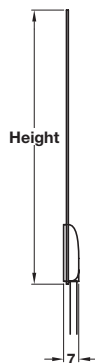
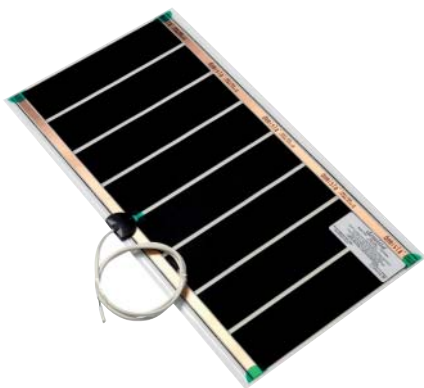


# HEATED MIRROR PAD

For the demisting of mirrors in bathrooms. Self-adhesive pad, fits behind most mirrors. Wire into lighting circuit or dedicated switch to suit electrical scheme.



## Heated mirror pad, IP44 rated



- > 230V
- > Self-adhesive pad, fits behind most mirrors
- > Wire into lighting circuit or dedicated switch to suit electrical scheme
- > For use in new homes, hotels, hospitals, leisure centres, caravans, mobile homes and many other areas
- > For new build or refurbishment projects
- > Low surface temperature
- > Economical to run
- > Maintenance free
- > Approved to UK and International standards
- > Supplied fitted with 1000 mm bare ended mains cable
- > Connections must be made by a qualified electrician
- > Carbon film technology
- > Order qty: 1 pc



| Width x Height | Nominal Wattage | Cat. No.   |
|----------------|-----------------|------------|
| 290 x 150 mm   | 7W              | 828.90.911 |
| 250 x 300 mm   | 15W             | 828.90.912 |
| 570 x 300 mm   | 25W             | 828.90.913 |
| 530 x 500 mm   | 50W             | 828.90.914 |
| 810 x 500 mm   | 80W             | 828.90.916 |



Mains plug is not included and must be fitted by a qualified electrician

PAGE AMENDED  
04.01.19/1

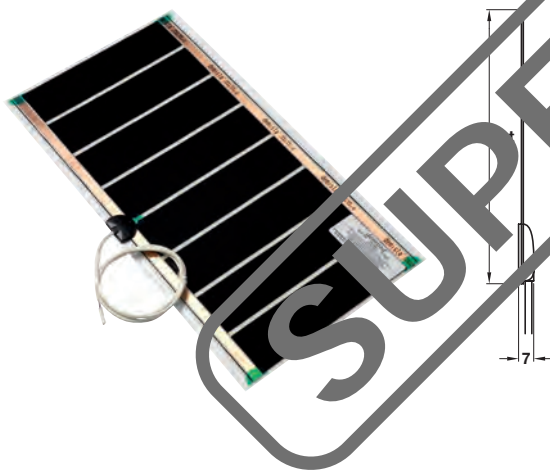
Approved by Product Info. Dept.

## HEATED MIRROR PAD

For the demisting of mirrors in bathrooms. Self-adhesive pad, fits behind most mirrors. Wire into lighting circuit or dedicated switch to suit electrical scheme.



Heated mirror pad, IP44 rated



- > 230V
- > Self-adhesive pad, fits behind most mirrors
- > Wire into lighting circuit or dedicated switch to suit electrical scheme
- > For use in new homes, hotels, hospitals, leisure centres, caravans, mobile homes and many other areas
- > For new build or refurbishment projects
- > Low surface temperature
- > Economical to run
- > Maintenance free
- > Approved to UK and International standards
- > Supplied fitted with 1000 mm bare ended mains cable
- > Connections must be made by a qualified electrician
- > Carbon film technology
- > Order qty: 1 pc



| Width x Height | Nominal Wattage | Cat. No.   |
|----------------|-----------------|------------|
| 274 x 150 mm   | 7W              | 828.90.911 |
| 274 x 264 mm   | 15W             | 828.90.912 |
| 584 x 274 mm   | 25W             | 828.90.913 |
| 524 x 520 mm   | 50W             | 828.90.914 |
| 785 x 524 mm   | 80W             | 828.90.916 |



Mains plug is not included and must be fitted by a qualified electrician