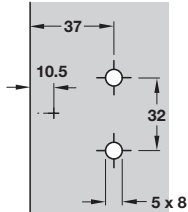
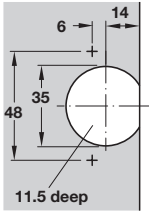


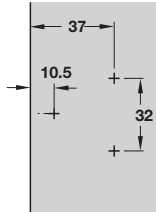
REGULA HINGES WITH EXPOSED AXLE



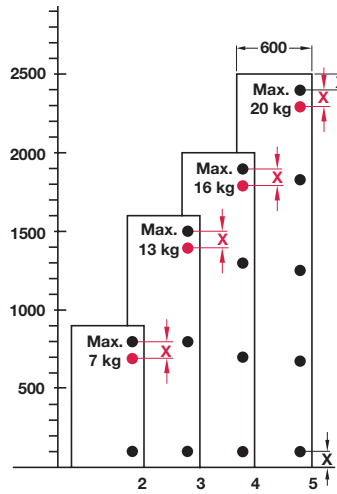
- > For door thickness 16 to 20 mm
- > With lateral adjustment up to 3 mm
- > With vertical adjustment ± 2 mm
- > With spring
- > Nickel-plated zinc alloy
- > Opening angle 250°



Drilling pattern for dowels or Varianta screws

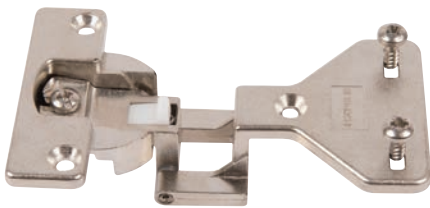


Drilling pattern for Hospa screws

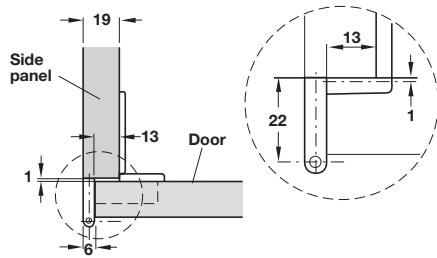


The hinge requirement is determined by the weight and the shape of the door. This table gives you a guideline for 19 mm chipboard. Doors must not be wider than they are high.

Regula corner hinge with exposed axle



- > Side panel mounting
- > Door fixing: Hospa $\varnothing 3.5$ mm raised head countersunk screws
- > Side panel fixing: Pre-mounted dowels and Hospa $\varnothing 3.5$ mm pan head screws
- > 13 mm door overlay
- > Order qty: 1 pc



Side panel fixing	Cat. No.
Pre-mounted dowels and screws	344.21.020