

PS40.1 FLUSH SLIDING DOOR SYSTEM

Flexible sliding door system for a pair of large flush wardrobe doors, each panel slides in front of the other, with soft closing in both directions. Guide rails, made of anodised aluminium, with self activating anti-derailment and can be cut to size.

- > PS40.1
- > Range:
 - Max. panel weight **60 kg**
 - Door thickness **16-55 mm**
 - Door width **890-1800 mm (600 mm when using one door only)**
- > With -4/+6 mm height adjustment



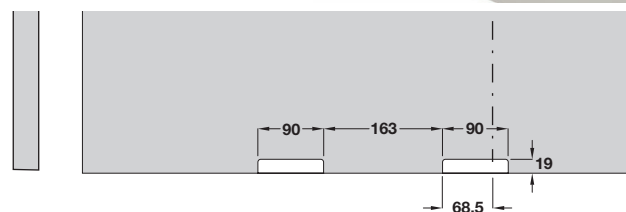
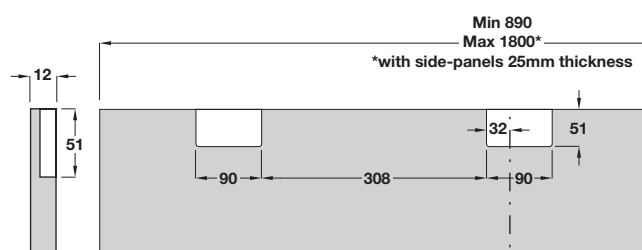
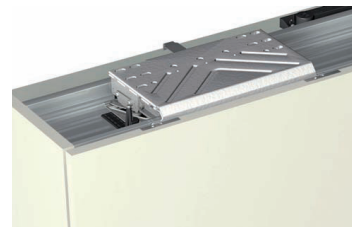
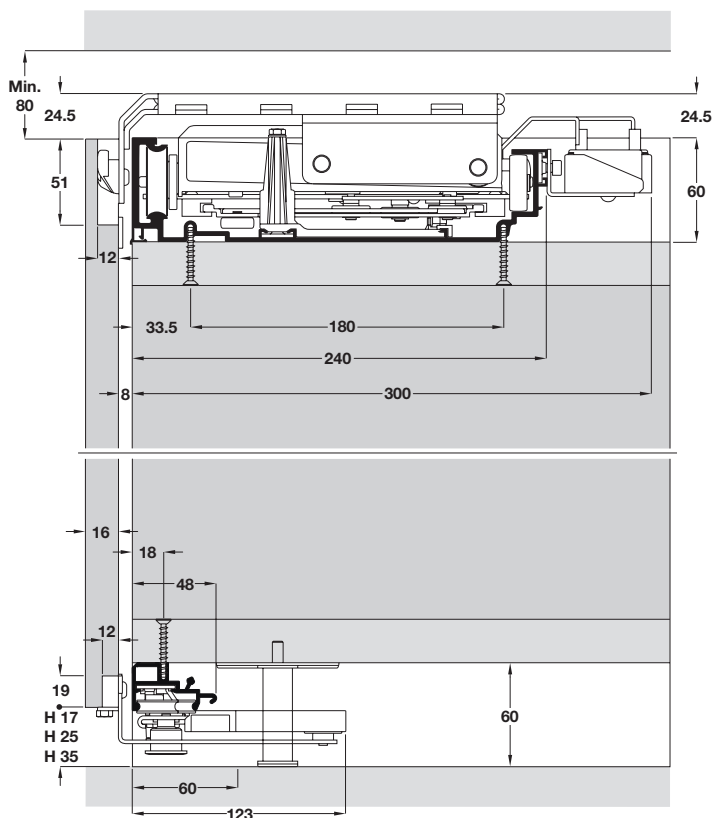
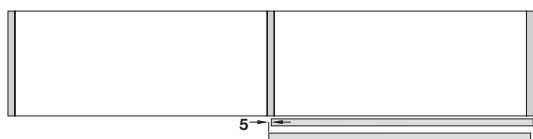
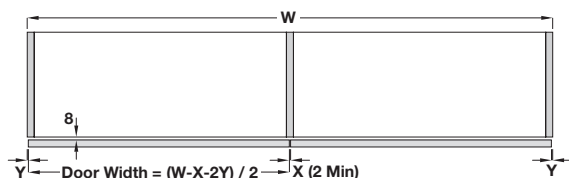
We recommend using Planofit door straighteners on this system, four sets per door; for information see pages **194-195**



Also available as

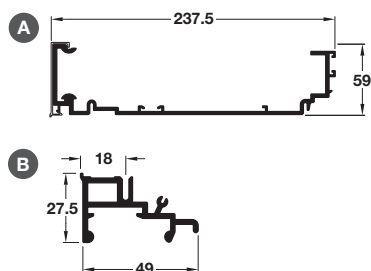
- > 3 door set
- > Electric version
- > Wave sensor version
- > Aluminium framed door version

Please contact **estimating@hafele.co.uk** for further information



TOH AH 2019, © Häfele U.K. Ltd 2019. Dimensional data not binding. We reserve the right to alter specifications without notice.

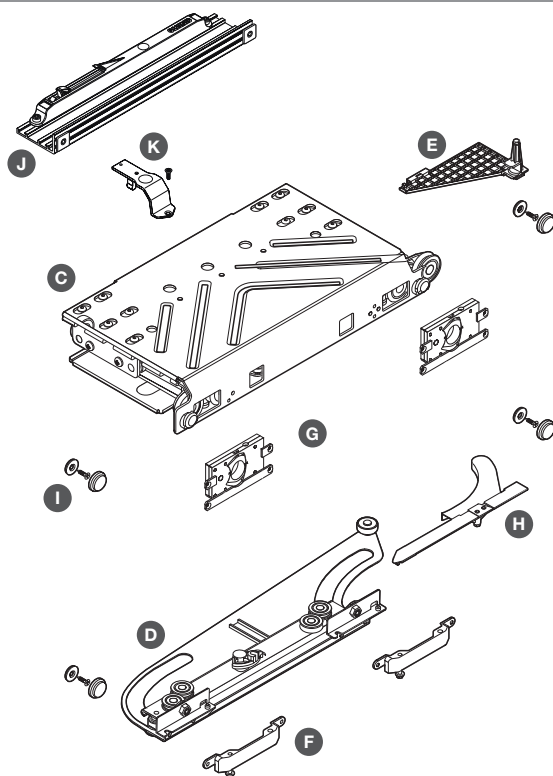
PS40.1 top and bottom guide rails



- > Order top and bottom guide rails separately
- > For screw fixing
- > Length 3050 mm
- > Satin silver anodised aluminium
- > Order qty: 1 pc

| Length | 3050 mm |
|---------------------|------------|
| A Top guide rail | 400.50.763 |
| B Bottom guide rail | 400.50.965 |

PS40.1 fitting set for 1 door



- > Order 1 left and 1 right hand door set
- > Fitting set, handed, for 1 door include:
 - C Top guide, handed, 1 pc
 - D Bottom guide, handed, 1 pc
 - E Top device for door hooking/adjustment, zinc alloy, 1 pc
 - F Bottom device for fixing bottom guide to door, zinc alloy, 2 pcs
 - G Top lock, handed, plastic, 1 pc
 - H Bottom lock, handed, zinc alloy, 1 pc
 - I Door corners spacers set, 1 set
 - J Soft closing device, handed, 1 pc
 - K Activator for soft closing device, handed, metal, 1 pc
- Fixings and assembly instructions are included
- > Order qty: 1 set

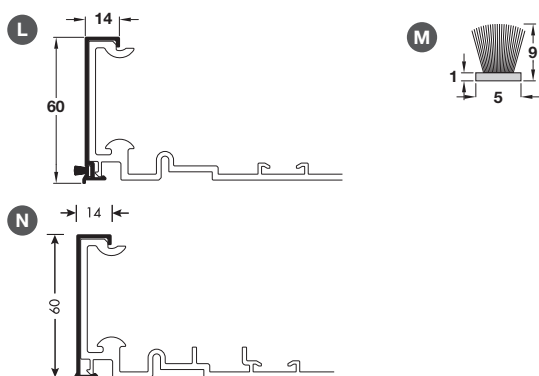


Installation instructions must be adhered to, please see website for fitting instructions and video. Please note below for important points:
CasseTte (c) must be fully open first and then installed into the guide rail
There must be a 1 mm clearance on the sprocket on the bottom guide beneath the door



| Fitting set | for left hand door | for right hand door |
|-------------|--------------------|---------------------|
| Cat. No. | 400.50.008 | 400.50.001 |

PS40.1 cover profile for top guide rail



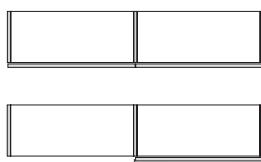
- > Slides onto PS40 top guide rail
- > With groove for insertion of dust brush
- > Order dust brush M Cat. No. 400.50.500 separately, if required
- > Satin silver anodised aluminium
- > Order qty: 1 pc

| Length | 3050 mm |
|----------------------|------------|
| L Cover profile | 400.50.764 |
| M Dust brush profile | 400.50.500 |
| N Cover profile | 400.50.765 |

PS40.1 complete fitting set with tracks



Complete system for 2 flush sliding doors



- > Complete set includes top and bottom guide rails, 3050 mm length, fitting sets for left and right hand doors, cover and dust brush profiles
- > Order qty: 1 set



| For 16-55 mm door thickness | Cat. No. |
|-----------------------------|------------|
| PS40 set for 2 doors | 400.50.016 |

PAGE AMENDED
10.12.19/3